



CASTLE

Engineering s.r.o.



SPECIALISTS IN
• CNC MACHINING

ALWAYS DEDICATED AND DEVOTED

WELCOME TO THE COMPANY CASTLE ENGINEERING S.R.O.

We are an engineering company specializing in CNC precision machining of metallic and non-metallic materials.

We provide engineering production from preparing a price quote, determining the technological process according to the technical drawing, actual production, technical control, surface treatments, packaging, and shipping. We manufacture components and assembled units. We are capable of producing in series from one piece to medium-sized batches.



CHOMUTOV
CZECH REPUBLIC

SERVICE

ALL IN ONE



COMMERCIAL

The department manages orders with customers for effective communication, agreement on conditions, and handover of projects.



DESIGN

For customers, we are able to provide 3D visualization, technological processes, including quality assurance and professional solutions.



PRODUCTION

First-class solutions, high precision, modern machines, and technologies. Ensuring quality and saving time.



ADDITIONAL SERVICES

Additional services include surface treatments, assembly, sandblasting - complete solutions for your projects.



SHIPPING

Shipping is responsible for fast delivery. Careful packaging and deadlines ensure customer satisfaction.

Machine Park

Horizontal Milling Machines



HAAS VF2 SS – 9 MACHINES

HAAS VF2 – 4 MACHINES

HAAS VF4 SS – 3 MACHINES

HAAS UMC 750 – 2 MACHINES

MINI MILL – 2 MACHINES

SUPER MINI MILL – 1 MACHINE

HAAS MDC PALLET CHANGER – 1 MACHINE

Capacity of 4,000 hours per month. Machines you can rely on.

Machine Park

- *Swiss-type Automatic Lathes*



STAR SR20
STAR SR32
STAR SV32
NAKAMURA-TOME WT-150



PRECISION – SPEED - FLEXIBILITY

PRODUCTION control

Quality – our highest priority

Generating and printing control reports and qualitative outputs from ARES NT COORD 3



INSPECTION AND QUALITY CONTROL

Castle Engineering prides itself on producing high-quality components.

We have implemented a strict quality control system that prevents potential errors.

To ensure the accuracy of our products, we also use a 3D coordinate measuring machine ARES NT COORD 3 with the ability to print reports, digital height gauges TRIMOS, a wide range of manual measuring instruments and gauges.

All certified and calibrated.



- ČSN EN ISO9001
- MEASUREMENT RECORDS
- IN-PROCESS CONTROL
- 8D – PROBLEM SOLVING
- FULL PRODUCT TRACEABILITY
- DOCUMENTED QUALITY MANAGEMENT SYSTEM

CERTIFICATION

Our company offers comprehensive service and support

We hold an ISO 9001 certification, which helps ensure the quality of production.

We meet strict standards through thorough control of the manufacturing process.

We provide production quality certificates.

We work with branded machines, where we have full-service support.

Collaborating with us guarantees product quality and comprehensive service for your success in the market.

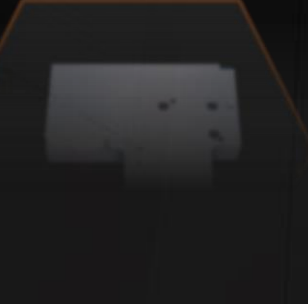
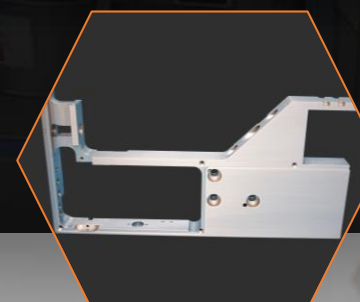
RoHC

PPAP

CTAP

REACH

MATERIAL
CERTIFICATE



● ADDITIONAL SERVICES

● Anodizing and surface treatments for perfect results

At our company, we understand the importance of comprehensive solutions for our customers and constantly strive to expand our range of services. We are pleased to offer you a wide range of surface treatments through both internal and external solutions, according to your requirements.

Anodizing (INT): an electrochemical process that creates a protective layer on the surface of metal parts, increasing their resistance to corrosion and wear. Anodized parts have a better aesthetic appearance and longer lifespan, making them an ideal choice for a range of applications.

In addition to anodizing, we also offer a wide range of surface treatments, which include:

Polishing (INT): Provides a smooth and shiny surface, which improves the aesthetics and durability of parts.

Sandblasting (INT): A process that removes impurities and creates a matte surface, increasing the adhesion of coatings and improving the appearance.

Nickel Plating (EXT): A chemical treatment that creates a protective layer against corrosion, wear, and improves material properties.

Tuftride (EXT): A special thermochemical treatment that improves resistance to wear, corrosion, and material fatigue. **AND OTHERS.**

Our experts in surface treatments and anodizing will be happy to help you choose the best solution for your project. We collaborate with reputable suppliers and ensure the highest quality of services to meet your expectations and achieve optimal results.



ANODIZING



POLISHING



SANDBLASTING



NICKEL PLATING



■ ■ ■ ■ ■
■ ■ ■ ■ ■
● SURFACE
● TREATMENTS

• SALES DEPARTMENT

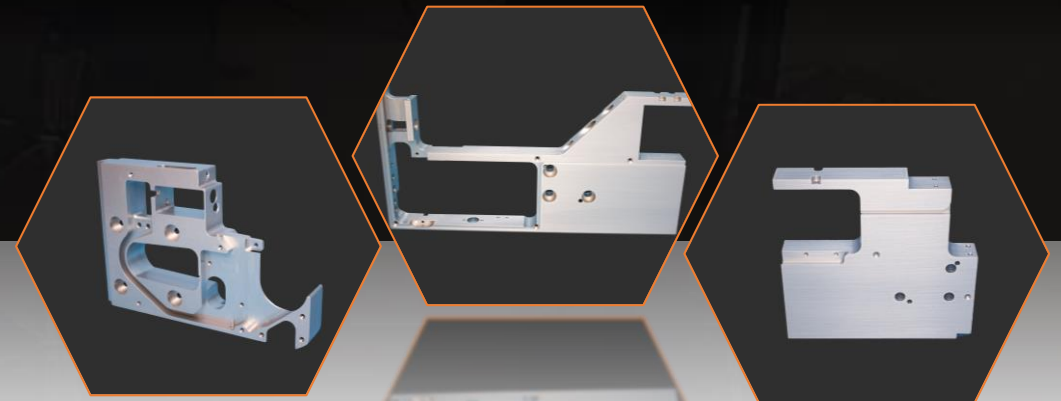
• WE ARE YOUR PROUD PARTNER.

The sales department is a key partner for our customers. It provides professional advice, negotiates terms and conditions, and ensures a smooth project workflow from initial concept to successful completion.

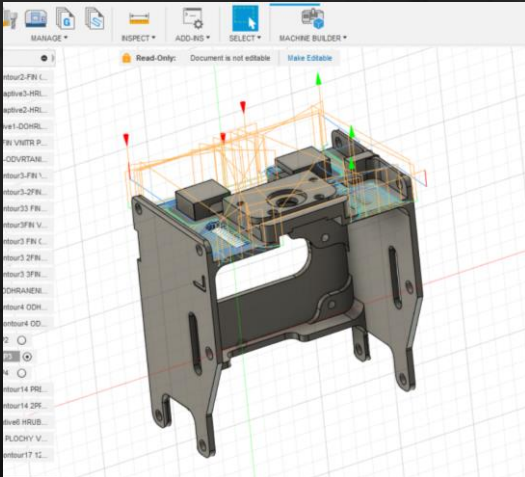
The sales department team is prepared to respond to client needs, offers tailored solutions, and maintains long-term relationships to ensure the satisfaction and success of all parties involved.

The sales department monitors market trends and innovations to offer the most up-to-date solutions for various industrial sectors. A collaborative approach and open communication enable the sales team to quickly identify opportunities for improvement and efficiency.

• YOUR SATISFACTION
• MATTERS TO US!

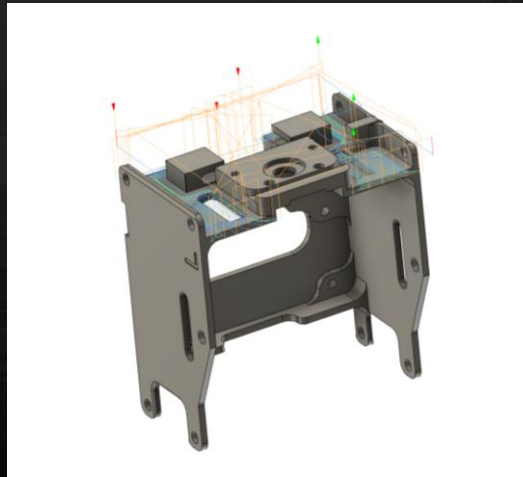


TECHNOLOGY - DESIGNS - DEVELOPMENT



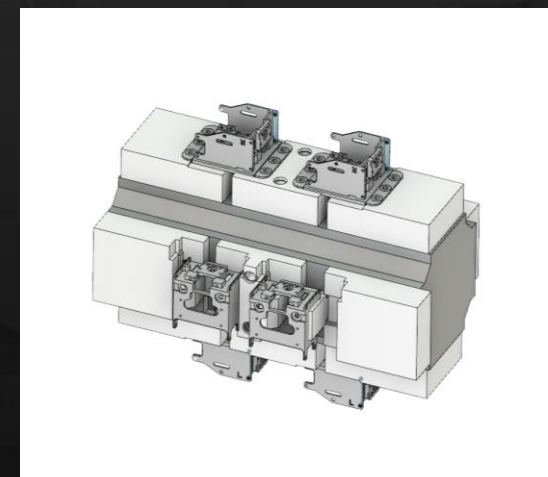
TECHNOLOGY

We carefully select the most suitable technologies that meet customer specifications and ensure optimal solutions.



DESIGNS

We create detailed design plans and models that serve as the basis for manufacturing. The design takes into account efficiency, functionality, and aesthetics of the product.



DEVELOPMENT

We work on prototyping, testing, and fine-tuning the product for manufacturing, focusing on adjustments and quality assurance to meet customer requirements and expectations.

CERTIFIED SUPPLIERS



Collaborating with environmentally responsible suppliers allows us to offer our customers products made from high-quality and safe materials that minimize the impact on the environment. Our company actively participates in environmental protection and ensures that the products we offer meet strict ecological standards.



ECOLOGY

Our company is committed to ecology and sustainability. We collaborate with certified suppliers according to RoHS and REACH for an environmentally friendly manufacturing process.



RoHS

RoHS restricts 6 hazardous substances in electronics: lead, cadmium, mercury, Cr6+, PBB, and PBDE. EU directive from 2003, revised in 2011.



RECYCLING

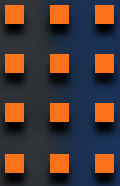
In the company, we efficiently recycle surplus materials and operational substances such as metals and oils from our machinery production, minimizing the impact on the environment.



REACH

REACH (EC No. 1907/2006) regulates chemicals in the EU. It ensures the protection of health and the environment. The industry bears responsibility.





TOOL SUPPLIERS

We ensure collaboration with reputable suppliers of high-quality tools for production. Emphasis is placed on the careful selection of tools that meet the requirements of the customer's project, which increases efficiency and precision in manufacturing.

Tool selection includes an analysis of materials, technologies, and procedures required for each project. The result is the optimization of the production process and a reduction of errors or waste.

This approach allows the company to maintain competitiveness and adhere to the highest quality standards within its industry, thereby gaining the trust and satisfaction of customers.



SPEED



PRECISION



FLEXIBILITY



DURABILITY



RELIABILITY

WE CARE ABOUT TOOL QUALITY

- We emphasize careful selection of suppliers and tools for the success of all our projects.
- We assure customers of our commitment to providing quality services and reliable tools.
- High-quality tools that influence the accuracy, speed, and efficiency of production processes.





HAAS VF4 SS

X: 1270mm y: 508mm z: 635mm



HAAS VF2 SS

X: 762mm y: 406mm z: 508mm



HAAS VF2 SS

X: 762mm y: 406mm z: 508mm



HAAS MDC 500 PALLET

X: 508mm y: 355mm z: 508mm
PALLET SIZE: 508mm x 323mm



HAAS MINI MILL

X: 406mm y: 305mm z: 254mm



HAAS UMC 750

X: 762mm y: 508mm z: 508mm



NAKAMURA-TOME WT-150

MAX Ø: 190mm MAX LENGTH: 250mm



STAR SR20

MAX Ø: 20mm, MAX LENGTH: 205mm



STAR SR32

MAX Ø: 32mm, MAX LENGTH: 310mm



STAR SV32

MAX Ø: 32mm, MAX LENGTH: 300mm



TECHNICAL PARAMETERS OF MACHINERY



STORAGE AND SHIPPING

KEY FEATURE OF LOGISTICS



Storage and shipping are key components of the logistics process in a company that deals with inventory management, material storage, finished product storage, and their subsequent delivery to customers.

Storage focuses on efficient organization and inventory management, while shipping ensures fast and reliable delivery of orders. Together, these two functions enable a smooth production and supply chain, ensuring customer satisfaction and company sustainability.

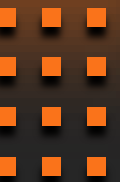
Efficiency: Efficient storage and inventory management ensure fast and easy access to necessary materials.

Accuracy: Accurate inventory tracking and material movement monitoring minimize errors and ensure the correct amount of components for production.

Flexibility: The ability to quickly respond to changes in customer orders or production plans allows for a smooth process.

Reliability: Collaboration with reliable shipping companies ensures timely and hassle-free delivery of finished products worldwide.

Part Number	Current Kanban Qty	Location	Czh Stock
a	100	A1	24
b	10	A2	0
c	10	A3	0
d	50	A4	0
e	176	A5	2162
f	448	B1	302
g	608	B2	-284
h	432	B3	643
ch	10	B4	0
i	100	B5	0
j	200	B6	660
k	180	B7	0
l	200	C1	373
m	80	C2	157
n	10	C3	0
o	10	C4	0
p	10	C5	0
q	80	C5	183
r	500	C1	313



• Our Chart

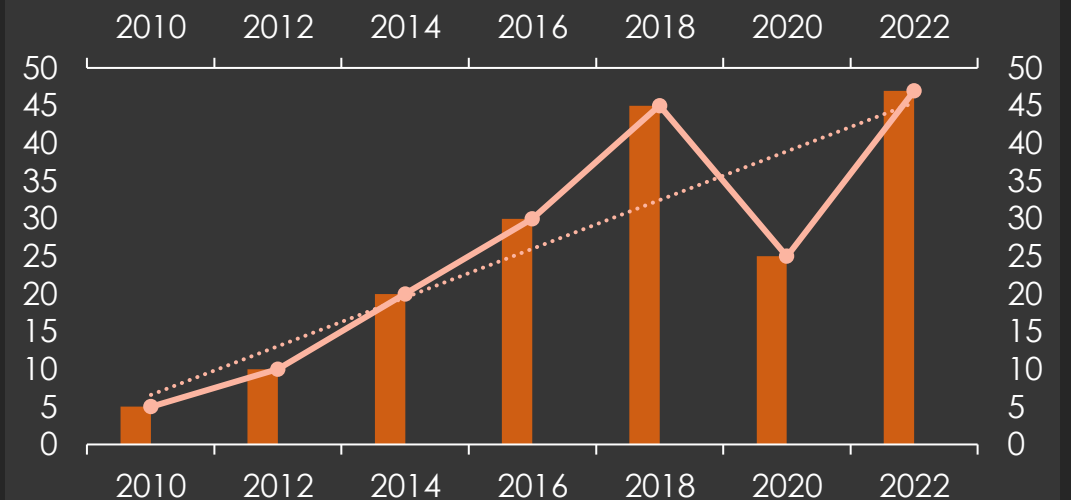
• Our *Performance*

Capacity : Overview from the establishment to the present.

The number of employees in the company has gradually grown since its establishment, thanks to successful acquisition of orders and expansion into new markets. This growth reflects the company's ability to adapt to changing market conditions, strengthen its expertise, and gain customer trust.

The development of the number of employees in Castle Engineering s.r.o. shows how the company's profile and team have evolved over the years.

The development of the number of employees in Castle Engineering s.r.o.





CONTACT



PRAŽSKÁ 585
43001 CHOMUTOV
IČ : 28265459
DIČ : CZ28265459



jerry@castle-engineering.cz
+420 739 510 587



6 Prospect Close
Kirkby in Ashfield
Nottingham
NG17 7LF



info@castle-engineering.co.uk
01623 752609

RICH PORTFOLIO OF CUSTOMERS



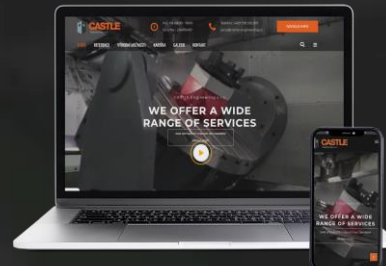
castle-engineering.cz



CASTLE
Engineering s.r.o.



THANK YOU



www.castle-engineering.cz